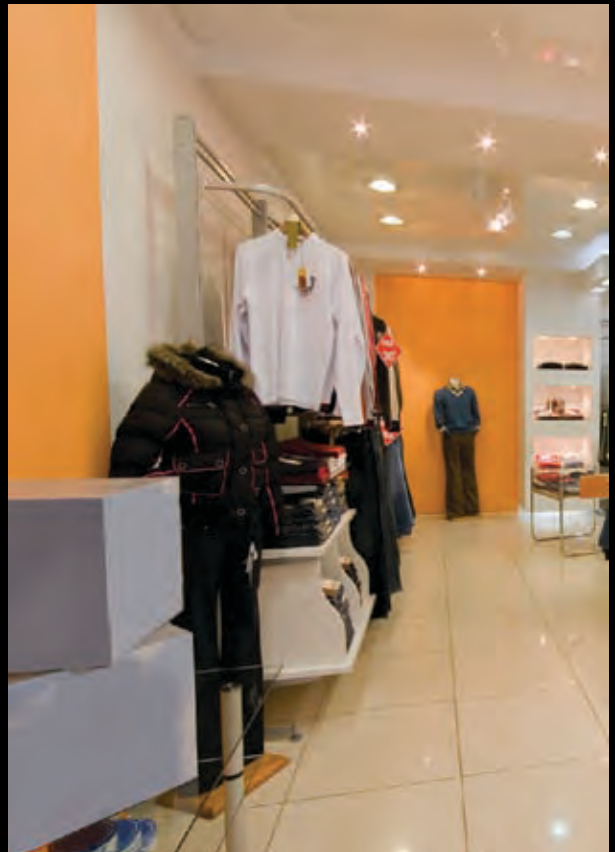
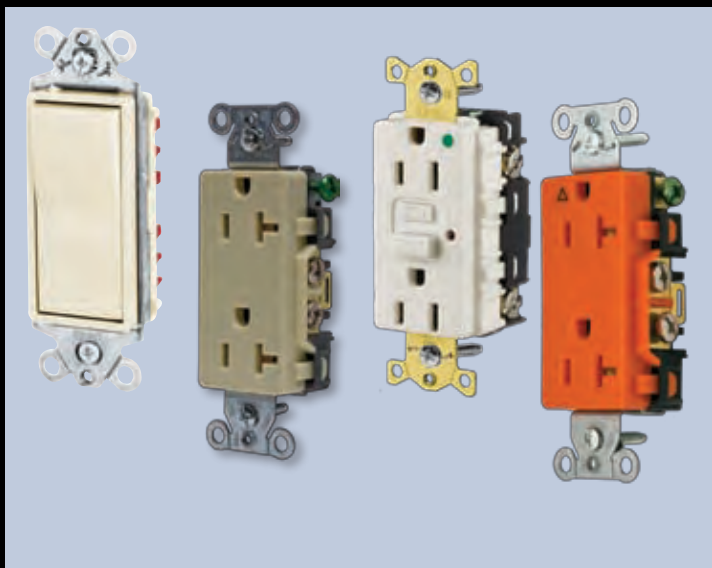


# Specification Grade Devices Buyer's Guide

# HUBBELL

Hubbell-Pro™ Heavy Duty Specification Grade Series  
Hubbell Specification Grade Commercial Series



# Hubbell-Pro™ Heavy Duty Specification Grade and Commercial

## Hubbell-Pro™ Heavy Duty Specification Grade

Description	Color	Standard Receptacle		Hospital Grade	
		15A 125V	20A 125V	15A 125V	20A 125V
SNAPConnect™ Finder Face	Brown	SNAP5262	SNAP5362	SNAP8200	SNAP8300
	Almond	SNAP5262AL	SNAP5362AL	SNAP8200AL	SNAP8300AL
	Black	SNAP5262BK	SNAP5362BK	SNAP8200BK	SNAP8300BK
	Gray	SNAP5262GY	SNAP5362GY	SNAP8200GY	SNAP8300GY
	Ivory	SNAP5262I	SNAP5362I	SNAP8200I	SNAP8300I
	Light Almond	SNAP5262LA	SNAP5362LA	SNAP8200LA	SNAP8300LA
	Red	SNAP5262R	SNAP5362R	SNAP8200R	SNAP8300R
	Office White	SNAP5262OW	SNAP5362OW	SNAP8200OW	SNAP8300OW
	White	SNAP5262W	SNAP5362W	SNAP8200W	SNAP8300W

Description	Color	Finder Face Standard Receptacle		Hospital Grade	
		15A 125V	20A 125V	15A 125V	20A 125V
Heavy Duty Specification Duplex Side and Back Wired	Brown	5262B	5362B	8200B	8300B
	Almond	5262AL	5362AL	8200AL	8300AL
	Black	5262BLK	5362BLK	—	—
	Blue	5262BL	5362BL	—	—
	Gray	5262G	5362G	8200G	8300G
	Ivory	5262I	5362I	8200I	8300I
	Light Almond	5262LA	5362LA	8200LA	8300LA
	Red	5262R	5362R	8200R	8300R
	Office White	5262OW	5362OW	—	—
	White	5262W	5362W	8200W	8300W

## Specification Grade Commercial

Description	Color	Standard Receptacle		Tamper-Resistant	
		15A 125V	20A 125V	15A 125V	20A 125V
Style Line® Decorator Side and Back Wired	Brown	DR15	DR20	DR15TR	DR20TR
	Almond	DR15AL	DR20AL	DR15ALTR	DR20ALTR
	Black	DR15BLK	DR20BLK	DR15BLKTR	DR20BLKTR
	Gray	DR15GRY	DR20GRY	DR15GRYTR	DR20GRYTR
	Ivory	DR15I	DR20I	DR15ITR	DR20ITR
	Light Almond	DR15LA	DR20LA	DR15LATR	DR20LATR
	Office White	DR15OW	DR20OW	—	—
	White	DR15WHI	DR20WHI	DR15WHITR	DR20WHITR
Smooth Face Side and Back Wired	Brown	BR15	BR20	BR15TR	BR20TR
	Almond	BR15AL	BR20AL	BR15ALTR	BR20ALTR
	Black	BR15BLK	BR20BLK	BR15BLKTR	BR20BLKTR
	Gray	BR15GRY	BR20GRY	BR15GRYTR	BR20GRYTR
	Ivory	BR15I	BR20I	BR15ITR	BR20ITR
	Light Almond	BR15LA	BR20LA	BR15LATR	BR20LATR
	White	BR15WHI	BR20WHI	BR15WHITR	BR20WHITR
Smooth Face Side Wired	Brown	CR15	CR20	CR15TR	CR20TR
	Almond	CR15AL	CR20AL	CR15ALTR	CR20ALTR
	Black	CR15BLK	CR20BLK	CR15BLKTR	CR20BLKTR
	Gray	CR15GRY	CR20GRY	CR15GRYTR	CR20GRYTR
	Ivory	CR15I	CR20I	CR15ITR	CR20ITR
	Light Almond	CR15LA	CR20LA	CR15LATR	CR20LATR
	White	CR15WHI	CR20WHI	CR15WHITR	CR20WHITR
Finder Face Side Wired	Brown	CRF15	CRF20	—	—
	Almond	CRF15AL	CRF20AL	—	—
	Black	CRF15BLK	CRF20BLK	—	—
	Gray	CRF15GRY	CRF20GRY	—	—
	Ivory	CRF15I	CRF20I	—	—
	Light Almond	CRF15LA	CRF20LA	—	—
	Office White	CRF15OW	CRF20OW	—	—
	White	CRF15WHI	CRF20WHI	—	—



SNAP5362I



SNAP8200I



SNAP2162



5362I



5252AI



DR20ITR



DR20GRYWRTR



IG20DR

# Specification Grade Duplex Receptacles



UL SP  
Style Line®  
Decorator  
Devices are  
not Fed Spec  
Listed

Style Line® Decorator*		Hospital Grade Style Line® Decorator		SNAPConnect™ Pigtail Terminal	
15A 125V	20A 125V	15A 125V	20A 125V	Description	
SNAP2152	SNAP2162	SNAP2172	SNAP2182	Clear terminal; 6 in. leads	
SNAP2152AL	SNAP2162AL	SNAP2172AL	SNAP2182AL	Straight	
SNAP2152BK	SNAP2162BK	SNAP2172BK	SNAP2182BK	Solid wire	SNAP6R1
SNAP2152GY	SNAP2162GY	SNAP2172GY	SNAP2182GY	Stranded wire	SNAP6R2
SNAP2152I	SNAP2162I	SNAP2172I	SNAP2182I	90° Angle	
SNAP2152LA	SNAP2162LA	SNAP2172LA	SNAP2182LA	Solid wire	SNAP1R
SNAP2152R	SNAP2162R	SNAP2172R	SNAP2182R	Stranded wire	SNAP2R
—	—	—	—		
SNAP2152W	SNAP2162W	SNAP2172W	SNAP2182W		



Smooth Face Standard Duplex		Isolated Ground			
15A 125V	20A 125V	15A 125V	20A 125V	Color	
5252AB	5352AB	IG5252	IG5352	Orange	
5252AAL	5352AAL	IG5252AL	IG5352AL	Almond	
5252ABLK	5352ABLK	IG5252GY	IG5352GY	Gray	
—	—	IG5252I	IG5352I	Ivory	
5252AG	5352AG	IG5252LA	IG5352LA	Light Almond	
5252AI	5352AI	IG5252W	IG5352W	White	
5252ALA	5352ALA				
5252AR	5352AR				
5252AOW	5352AOW				
5252AW	5352AW				



Weather Resistant		Weather and Tamper-Resistant		Isolated Ground	
15A 125V	20A 125V	15A 125V	20A 125V	15A 125V	20A 125V
—	—	DR15WRTR	DR20WRTR	IG15DR	IG20DR
—	—	DR15ALWRTR	DR20ALWRTR	IG15DRAL	IG20DRAL
—	—	DR15BLKWRTR	DR20BLKWRTR	IG15DRGRY	IG20DRGRY
—	—	DR15GRYWRTR	DR20GRYWRTR	IG15DRI	IG20DRI
—	—	DR15IWRTR	DR20IWRTR	IG15DRLA	IG20DRLA
—	—	DR15LAWRTR	DR20LAWRTR	IG15DRW	IG20DRW
—	—	—	—		
—	—	DR15WHIWRTR	DR20WHIWRTR		
BR15WR	BR20WR	BR15WRTR	BR20WRTR	—	—
BR15ALWR	BR20ALWR	BR15ALWRTR	BR20ALWRTR	—	—
BR15BLKWR	BR20BLKWR	BR15BLKWRTR	BR20BLKWRTR	—	—
BR15GRYWR	BR20GRYWR	BR15GRYWRTR	BR20GRYWRTR	—	—
BR15IWR	BR20IWR	BR15IWRTR	BR20IWRTR	—	—
BR15LAWR	BR20LAWR	BR15LAWRTR	BR20LAWRTR	—	—
BR15WHIWR	BR20WHIWR	BR15WHIWRTR	BR20WHIWRTR	—	—
—	—	—	—	IG15CR	IG20CR
—	—	—	—	IG15CRAL	IG20CRAL
—	—	—	—	IG15CRGRY	IG20CRGRY
—	—	—	—	IG15CRI	IG20CRI
—	—	—	—	IG15CRLA	IG20CRLA
—	—	—	—	IG15CRWHI	IG20CRWHI
—	—	—	—	—	—
—	—	—	—	—	—
—	—	—	—	—	—
—	—	—	—	—	—
—	—	—	—	—	—
—	—	—	—	—	—



BR15I BR15IWR BR20WRTR CR15I CR15TR CRF15WHI IG20CR



Wiring Device-Kellems

# Specification Grade Switches



## Hubbell-Pro™ Heavy Duty Specification Grade Side and Back Wired



Color	Single Pole		Double Pole		Three Way		Four Way	
	15A	20A	15A	20A	15A	20A	15A	20A
Brown	1201B	1221B	—	1222B	1203B	1223B	—	1224B
Almond	1201AL	1221AL	—	1222AL	1203AL	1223AL	—	1224AL
Black	1201BK	1221BK	—	1222BK	1203BK	1223BK	—	1224BK
Gray	1201GY	1221GY	—	1222GY	1203GY	1223GY	—	1224GY
Ivory	1201I	1221I	—	1222I	1203I	1223I	—	1224I
Light Almond	1201LA	1221LA	—	1222LA	1203LA	1223LA	—	1224LA
Red	—	1221R	—	1222R	—	1223R	—	1224R
White	1201W	1221W	—	1222W	1203W	1223W	—	1224W

## Specification Grade Commercial Style Line® Decorator Side and Back Wired



Color	Single Pole		Double Pole		Three Way		Four Way	
	15A	20A	15A	20A	15A	20A	15A	20A
Brown	DS115	DS120	—	DS220B	DS315	DS320	—	DS420
Almond	DS115AL	DS120AL	—	DS220AL	DS315AL	DS320AL	—	DS420AL
Black	DS115BK	DS120BK	—	DS220BK	DS315BK	DS320BK	—	DS420BK
Gray	DS115GY	DS120GY	—	DS220GY	DS315GY	DS320GY	—	DS420GY
Ivory	DS115I	DS120I	—	DS220I	DS315I	DS320I	—	DS420I
Light Almond	DS115LA	DS120LA	—	DS220LA	DS315LA	DS320LA	—	DS420LA
Office White	DS115OW	DS120OW	—	DS220OW	DS315OW	DS320OW	—	DS420OW
White	DS115W	DS120W	—	DS220W	DS315W	DS320W	—	DS420W

## Specification Grade Commercial Illuminated and Pilot Light Style Line® Decorator



Color	Single Pole		Double Pole		Three Way		Four Way	
	15A	20A	15A	20A	15A	20A	15A	20A
Ivory	—	DS120IL	—	—	—	DS320IL	—	—
White	—	DS120ILW	—	—	—	DS320ILW	—	—
Pilot light	—	DS120PL	—	—	—	—	—	—

## Specification Grade Commercial Side and Back Wired



Color	Single Pole		Double Pole		Three Way		Four Way	
	15A	20A	15A	20A	15A	20A	15A	20A
Brown	CSB115	CSB120	CSB215	CSB220	CSB315	CSB320	CSB415	CSB420
Almond	CSB115AL	CSB120AL	CSB215AL	CSB220AL	CSB315AL	CSB320AL	CSB415AL	CSB420AL
Black	CSB115BK	CSB120BK	CSB215BK	CSB220BK	CSB315BK	CSB320BK	CSB415BK	CSB420BK
Gray	CSB115GY	CSB120GY	CSB215GY	CSB220GY	CSB315GY	CSB320GY	CSB415GY	CSB420GY
Ivory	CSB115I	CSB120I	CSB215I	CSB220I	CSB315I	CSB320I	CSB415I	CSB420I
Light Almond	CSB115LA	CSB120LA	CSB215LA	CSB220LA	CSB315LA	CSB320LA	CSB415LA	CSB420LA
Office White	—	CSB120OW	—	CSB220OW	—	CSB320OW	—	CSB420OW
Red	—	CSB120R	—	CSB220R	—	CSB320R	—	CSB420R
White	CSB115W	CSB120W	CSB215W	CSB220W	CSB315W	CSB320W	CSB415W	CSB420W

## Specification Grade Commercial Side Wired



Color	Single Pole		Double Pole		Three Way		Four Way	
	15A	20A	15A	20A	15A	20A	15A	20A
Brown	CS115	CS120	—	—	CS315	CS320	—	—
Almond	CS115AL	CS120AL	—	—	CS315AL	CS320AL	—	—
Gray	CS115GY	CS120GY	—	—	CS315GY	CS320GY	—	—
Ivory	CS115I	CS120I	—	—	CS315I	CS320I	—	—
Light Almond	CS115LA	CS120LA	—	—	CS315LA	CS320LA	—	—
Office White	CS115OW	CS120OW	—	—	CS315OW	CS320OW	—	—
White	CS115W	CS120W	—	—	CS315W	CS320W	—	—





# Commercial GFCI and Surge Suppression Receptacles



## Commercial Series LED, GFCI

Description	Color	Standard Receptacles		Hospital Grade	
		15A 125V	20A 125V	15A 125V	20A 125V
15 and 20 Ampere; 125 Volts; 2-Pole, 3-Wire Grounding  Meets July 28, 2006 UL Standard 943 Class A GFCI	Brown Almond Black Gray Ivory Light Almond Office White Red White	GF15LA GF15ALLA GF15BKLA GF15GYLA GF15ILA GF15LALA GF15OWLA GF15RLA GF15WLA	GF20LA GF20ALLA GF20BKLA GF20GYLA GF20ILA GF20LALA GF20OWLA GF20RLA GF20WLA	GFR8200HLA GFR8200HALLA GFR8200HBKLA GFR8200HGYLA GFR8200HILA GFR8200HLALA GFR8200HOWLA GFR8200HRLA GFR8200HWLA	GFR8300HLA GFR8300HALLA GFR8300HBKLA GFR8300HGYLA GFR8300HILA GFR8300HLALA GFR8300HOWLA GFR8300HRLA GFR8300HWLA
Tamper-Resistant; 15 and 20 Ampere; 125 Volts; 2-Pole, 3-Wire Grounding  Meets July 28, 2006 UL Standard 943 Class A GFCI  	Brown Almond Black Gray Ivory Light Almond Office White Red White	GFTR15 GFTR15AL GFTR15BK GFTR15GY GFTR15I GFTR15LA GFTR15OW GFTR15R GFTR15W	GFTR20 GFTR20AL GFTR20BK GFTR20GY GFTR20I GFTR20LA GFTR20OW GFTR20R GFTR20W	GFR8200HTR GFR8200HALTR GFR8200HBKTR GFR8200HGYTR GFR8200HITR GFR8200HLATR GFR8200HOWTR GFR8200HRTR GFR8200HWTR	GFR8300HTR GFR8300HALTR GFR8300HBKTR GFR8300HGYTR GFR8300HITR GFR8300HLATR GFR8300HOWTR GFR8300HRTR GFR8300HWTR

GFCI type receptacles should not be used in critical care patient areas or for electrical life support equipment applications because of the possibility of power interruption. All GFCI receptacles listed above are furnished with the proper color nylon wallplate.



GF15ILA



GFTR20I



GFR8200HOWLA



GFR8300HITR

## Circuit Guard®, Specification Grade Surge Suppression Duplex Receptacles

Description	Color	Standard Receptacles		Hospital Grade	
		15A 125V	20A 125V	15A 125V	20A 125V
Surge suppression receptacles with light; 240 joules/15000A per mode.  	Blue Ivory Office White	HBL5260SA HBL5260ISA HBL5260OWSA	HBL5360SA HBL5360ISA HBL5360OWSA	— — —	— — —
Surge suppression receptacles with light and alarm; 240 joules/15000A per mode.  	Almond Blue Gray Ivory Office White White	HBL5262ALSA HBL5262SA HBL5262GYSA HBL5262ISA HBL5262OWSA HBL5262WSA	HBL5362ALSA HBL5362SA HBL5362GYSA HBL5362ISA HBL5362OWSA HBL5362WSA	HBL8262ALSA HBL8262SA HBL8262GYSA HBL8262ISA HBL8262RSA HBL8262WSA	HBL8362ALSA HBL8362SA HBL8362GYSA HBL8362ISA HBL8362RSA HBL8362WSA
Δ Isolated ground, surge suppression receptacles with light and alarm; 240 joules/15000A per mode.  	Blue Gray Ivory Office White Orange White	IG5262SA IG5262GYSA IG5262ISA IG5262OWSA IG5262OSA IG5262WSA	IG5362SA IG5362GYSA IG5362ISA IG5362OWSA IG5362OSA IG5362WSA	IG8262SA IG8262GYSA IG8262ISA IG8262OSA IG8262RSA IG8262WSA	IG8362SA IG8362GYSA IG8362ISA IG8362OSA IG8362RSA IG8362WSA



HBL5262GYSA



HBL5362SA



HBL8362ISA



IG8362RSA



Wiring Device-Kellems

# H-MOSS® Occupancy Sensors and Wallplates

## Hubbell H-MOSS® Occupancy Sensors



The Hubbell H-MOSS line of occupancy sensors features a broad line-up of dual technology, ultrasonic and passive infrared (PIR) ceiling, wall switch and wall mount sensors. Many of the sensors feature Adaptive Technology, a Hubbell breakthrough, which enables building owners and occupants to reduce energy costs, with fewer adjustments. Visit the Hubbell website at [www.hubbell-wiring.com](http://www.hubbell-wiring.com) to view the complete H-MOSS occupancy sensor offering.

### Adaptive Technology Dual Technology



Type	Catalog Number
Wall Switch	<b>AD1277xx</b>
Ceiling	<b>ATD2000C, ATD1000C, ATD500C</b>
Wall Mount	<b>ATD1600W</b>

### Ultrasonic



Type	Catalog Number
Wall Switch	<b>AU1277xx</b>
Ceiling	<b>ATU2000C, ATU1000C, ATU500C</b>

### Passive Infrared (PIR)



Type	Catalog Number
Wall Switch	<b>AP1277xx, ATP1277x, AT1277x</b>
Ceiling	<b>ATP1500C, ATP600C</b>
Wall Mount	<b>ATP1600W, ATP120HB</b>

AD, AU and AP wall switches are available in single or dual circuits, with and without buttons. The AD/AU/AP1277 series wall switches are available in Ivory (I) and White (W) as standard colors. The AT/ATP1277 sensors are available in Ivory (I) or White (W). To order colors, replace **xx** with appropriate suffix. Ceiling and wall mount sensors are available in white only. Must use a CU Series control unit with all ceiling and wall sensors.

### Non Adaptive Passive Infrared



Type	Catalog Number
Wall Switch	<b>WS1277x, WS120x, WS277x, WS1277W2</b>

For color options, replace **x** with White (W) or Ivory (I). WS1277W2 is available in white only.

### Line Voltage



Technology	Catalog Number
Dual	<b>LVDT2000Rxxx</b>
Ultrasonic	<b>LVUS1500Rxxx, LVUS2000Rxxx</b>
PIR	<b>LVPR1500R (120-347V AC)</b>

Available in 120V AC and 277V AC. Replace **xxx** with 120 or 277 for appropriate voltage.

### Residential (Occupancy and Vacancy)



Type	Occupancy	Vacancy
Wall Switch	<b>RMS101xx, RMS141xx</b>	<b>RMS100xx, RMS140xx</b>
Wall Switch w/dimming	<b>RMS121xx,</b>	<b>RMS120xx</b>

For color options, replace **xx** with Ivory (I), White (W), Almond (AL) or Light Almond (LA).

## Hubbell Wallplates

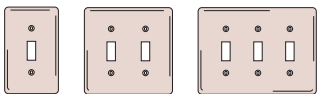
Hubbell offers a wide variety of configurations, sizes and finishes in both metal and nylon wallplates for use in Specification, commercial, and residential applications. Hubbell's complete line of wallplates include standard, midsize, custom metal and jumbo in stainless steel, brass, brass plated, chrome, aluminum and nylon. Visit the Hubbell website at [www.hubbell-wiring.com](http://www.hubbell-wiring.com) to view the complete wallplate offering.



To order nylon wallplates, replace **xx** with appropriate color suffixes.

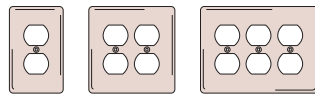


### Toggle Switch



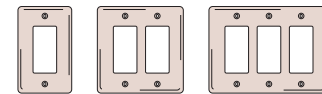
Gang	430 S/S	302/304 S/S	Nylon
1	<b>SS1L</b>	<b>SS1</b>	<b>NP1xx</b>
2	<b>SS2L</b>	<b>SS2</b>	<b>NP2xx</b>
3	<b>SS3L</b>	<b>SS3</b>	<b>NP3xx</b>

### Duplex Receptacle



Gang	430 S/S	302/304 S/S	Nylon
1	<b>SS8L</b>	<b>SS8</b>	<b>NP8xx</b>
2	<b>SS82L</b>	<b>SS82</b>	<b>NP82xx</b>
3	—	<b>SS83</b>	<b>NP83xx</b>

### Style Line® Decorator



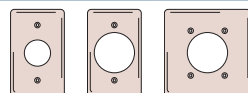
Gang	430 S/S	302/304 S/S	Nylon
1	<b>SS26L</b>	<b>SS26</b>	<b>NP26xx</b>
2	<b>SS262L</b>	<b>SS262</b>	<b>NP262xx</b>
3	—	<b>SS263</b>	<b>NP263xx</b>

### Blank (Box Mount/Strap Mount)



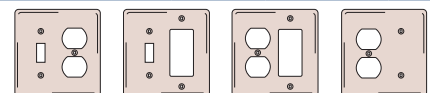
Gang	430 S/S	302/304 S/S	Nylon
<b>Box Mount</b>			
1	<b>SS13L</b>	<b>SS13</b>	<b>NP13xx</b>
2	<b>SS23L</b>	<b>SS23</b>	<b>NP23xx</b>
<b>Strap Mount</b>			
1	<b>SS14L</b>	<b>SS14</b>	<b>NP14xx</b>
2	<b>SS24L</b>	<b>SS24</b>	<b>NP24xx</b>

### Single Receptacle



Gang	Dia. Hole	430 S/S	302/304 S/S	Nylon
1	1.40" (35.6)	<b>SS7L</b>	<b>SS7</b>	<b>NP7xx</b>
1	2.15" (54.6)	<b>SS723L</b>	<b>SS723</b>	<b>NP724xx</b>
2	2.15" (54.6)	<b>SS703L</b>	<b>SS703</b>	<b>NP703xx</b>

### Combination



Gang	430 S/S	302/304 S/S	Nylon	
2	Toggle/Duplex	<b>SS18L</b>	<b>SS18</b>	<b>NP18xx</b>
2	Toggle/Decorator	<b>SS126L</b>	<b>SS126</b>	<b>NP126xx</b>
2	Duplex/Decorator	—	<b>SS826</b>	<b>NP826xx</b>
2	Duplex/Blank	—	<b>SS138</b>	<b>NP138xx</b>

# Competitive Cross Reference Guide

## Duplex Receptacles

Device Category	Description	Hubbell Series	Hubbell	Leviton	Pass and Seymour
Extra Heavy Duty Industrial	15 and 20 Amp, 125 Volts, Back & Side Wired	HBL® Series	20A 15A HBL5362 HBL5262	5362	5362A
Extra Heavy Duty Industrial	15 and 20 Amp, 125 Volts, Back & Side Wired, Hospital Grade	HBL® Series	20A 15A HBL8300 HBL8200	8300	8300
Heavy Duty Specification	15 and 20 Amp, 125 Volts, Back & Side Wired	Hubbell-Pro™	20A 15A 5362 Series 5262 Series	5362S	5362
Heavy Duty Specification	15 and 20 Amp, 125 Volts, Back & Side Wired, Smooth Face	Hubbell-Pro™	20A 15A 5352A 5252A	n/a	CRB5362S
Heavy Duty Specification	15 and 20 Amp, 125 Volts, Back & Side Wired, Hospital Grade	Hubbell-Pro™	20A 15A 8300 Series 8200 Series	8300H	PS8300H
Heavy Duty Specification	15 and 20 Amp, 125 Volts	SNAPConnect™	20A 15A SNAP5362 SNAP5262	M5362	PT5362A
Heavy Duty Specification	15 and 20 Amp, 125 Volts, Hospital Grade	SNAPConnect™	20A 15A SNAP8300 SNAP8200	M8300	PT8300
Heavy Duty Specification	15 and 20 Amp, 125 Volts, Style Line® Decorator	SNAPConnect™	20A 15A SNAP2162 SNAP2152	n/a	PT26352
Commercial Specification	15 and 20 Amp, 125 Volts, Back & Side Wired	Commercial Series	20A 15A BR20 BR15	BR20	BR20
Commercial Specification	15 and 20 Amp, 125 Volts, Side Wire Only	Commercial Series	20A 15A CR20 CR15	CR20	CR20
Commercial Specification	15 and 20 Amp, 125 Volts, Back & Side Wired, Style Line® Decorator	Commercial Series	20A 15A DR20 DR15	16342	26852

## Switches

Device Category	Description	Hubbell Series	Hubbell	Leviton	Pass and Seymour
Extra Heavy Duty Industrial	15A and 20Amp, 120-277 Volts AC, Single Pole to 4-Way, Back & Side Wired	HBL® Series	20A 15A HBL1221 HBL1201	1221-2	N/A
Heavy Duty Specification	15A and 20Amp, 120-277 Volts AC, Single Pole to 4-Way, Back & Side Wired	Hubbell-Pro™	20A 15A 1221 1201	1221S	PS20AC
Commercial Specification	15A and 20Amp, 120-277 Volts AC, Single Pole to 4-Way, Back & Side Wired	Commercial Series	20A 15A CSB120 CSB115	CSB1-20	CSB20AC
Commercial Specification	15A and 20Amp, 120-277 Volts AC, Single Pole to 3-Way, Side Wired Only	Commercial Series	20A 15A CS120 CS115	CS120	CS20AC
Commercial Specification	15A and 20Amp, 120-277 Volts AC, Single Pole to 4-Way, Back & Side Wired, Style Line® Decorator	Commercial Series	20A 15A DS120 DS115	5620	2600

# Specification Grade Devices

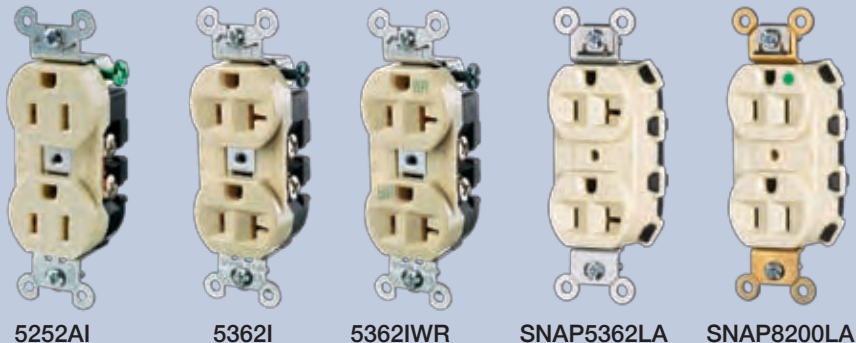
## Buyer's Guide

# HUBBELL

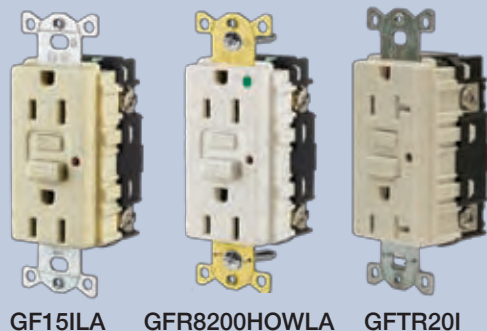
### Hubbell-Pro™ Heavy Duty Specification Grade Series

### Hubbell Specification Grade Commercial Series

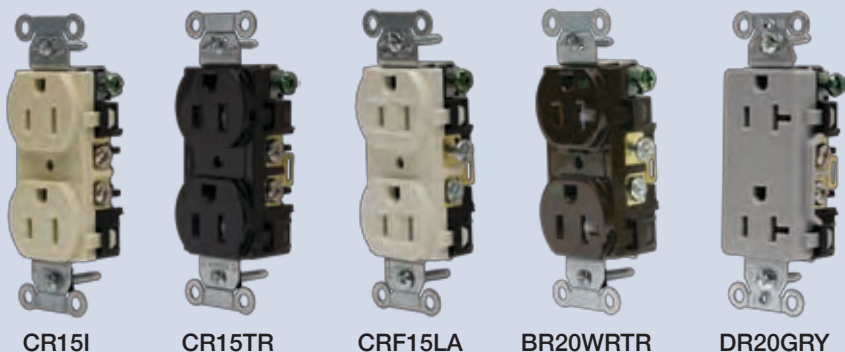
#### Hubbell-Pro™ Heavy Duty Specification Grade Receptacles



#### Hubbell GFCI Receptacles



#### Hubbell Specification Grade Commercial Receptacles



#### Hubbell H-MOSS® Occupancy Sensors



#### Specification Grade Commercial and Hubbell-Pro™ Heavy Duty Specification Grade Switches



#### Hubbell Metal and Nylon Wallplates



**HUBBELL®**  
Wiring Device-Kellems

[www.hubbell-wiring.com](http://www.hubbell-wiring.com)

